

## LEGEND AND FOLKLORE SYMBOLS: BALDER

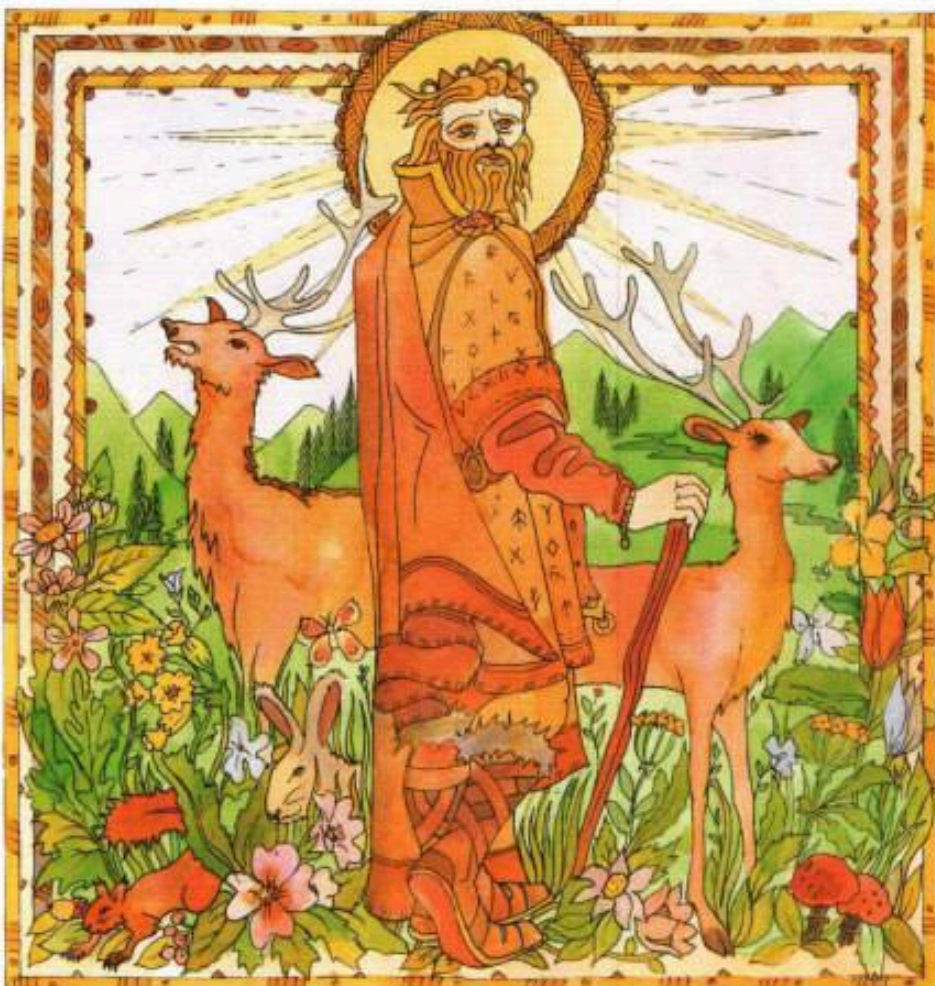
*The fairest god of them all was beloved to every living thing and brings you shining beauty and brightness.*

**K**nown in Norse mythology as Balder the fair, Balder the bright or Balder the beautiful, this mythical son of Odin and Frigg was the most radiant of all the gods. Crowned by a golden disc and embellished with amber beads, he appears bedecked in golden sigil runes. At his birth all life on Earth vowed never to harm him, but the mistletoe was too young to make the pledge.

### Arch enemy Loki

Loki, the trickster god, fashioned a weapon from mistletoe and convinced the blind Giant Hodur to cast it, killing Balder. His body was carried in a flaming ship west, to the realms of the goddess Hel, who agreed to release him if all the beings of the Earth mourned. Loki, disguised as a giantess, refused to shed a tear; however, his crimes were discovered and he was punished by being bound underground with a serpent's venom dripping into his mouth, causing eternal agony.


*Balder was loved by all of nature and was safe from harm by any living thing.*



## THE SYMBOLISM OF BALDER





The symbols that are most associated with the god Balder bring brightness and beauty to the bearer. They are symbolic of nature and the warmth and Sun of summer.

 By wearing a golden ring on his solar

**Mistletoe was honoured by the Druids due to its magical qualities and transformative powers.**

(Apollo) finger, Balder's sovereignty is symbolised. His immortality is also implied by the ring, which is a sign of regeneration.

 The golden disc that crowned Balder and the amber beads he wears represent the Sun, allying Balder with the symbol of the summer hero. Blessed and beautiful, he reigns for the waxing year to be overcome and sacrificed in the winter.

 The mistletoe, the one living thing that did not vow not to harm Balder, is a sacred plant that grows attached to mighty oaks, somewhere between the Earth and the sky. As such, it was honoured by the Druids for its magical powers. The New Year was said to begin at Yule when a mistletoe berry, seed of the Sun, fell onto the ground, conceiving the light in the darkness.